

STATEMENT OF NEED

ST ANDREW'S CHURCH, WHITTLESEY

Section I – General Information

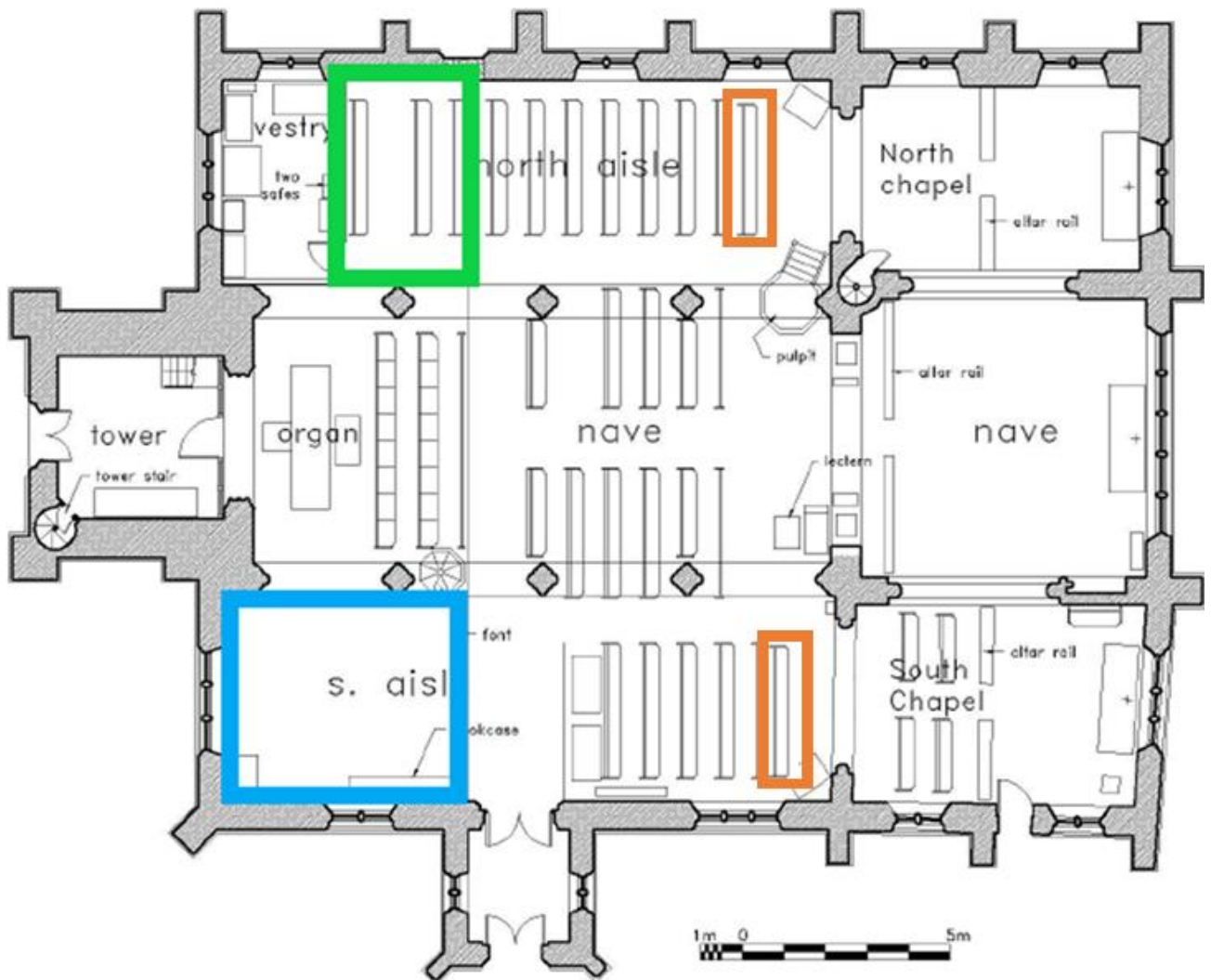
Population of Whittlesey: 14000 (shared with the parish of St Mary's, Whittlesey)

Number on the church electoral roll: 54

Usual Sunday attendance: 24

Occasional Offices: Christenings take place in the main Sunday service but St Andrew's has hosted seven funerals so far this year (Jan-June 2023) and has two weddings booked for this year.

We have a very active Friends of St Andrew's Church who organise and host a number of events and fundraising activities each year.



Plan of the Church

Section II – The Need

To improve the welcome and hospitality that we can offer to both our regular church congregation and visitors to St Andrew’s Church for occasional offices and special events.

To achieve this, the proposals below include:

- A Children’s Area within the church
- The creation of an open and flexible space in one corner of the church – in which we can offer much better hospitality.
- The removal of two additional pews to create space

Section III – The Proposals

Proposal – Children’s Corner: In November 2022 we were granted a TMRO to flip two pews around and create a ‘Children’s Corner’ in the south aisle of the church. We would like to apply for a faculty to make this a permanent fixture of the church’s layout.

This area is well used by the (small number of) children who worship with us on a Sunday and even more so by children who visit us for Baptisms, Weddings and occasionally Funerals. It has become an integral part of our hospitality when we welcome younger visitors to St Andrew’s.



Before TMRO



Ater TMRO (Now)

To further improve this space, we would like to remove the small pew that currently sits sideways-on, parallel to north wall.



View of the Children's Corner from the entrance/Font

Proposal – Hospitality Space: The PCC would also like to apply for a faculty to remove five pews in the south-west corner of the church to create a flexible space which would greatly improve the welcome and hospitality we are able to offer as a church.

As you can see from the plan of the church, there is very little open space in St Andrew's and the building is filled with pews and other items of furniture that we have inherited. Currently, when the church enjoy refreshments after the service, there is nowhere for our congregation to comfortably sit and talk and so church members are left to stand around by the entrance to drink their tea/coffee.

The PCC would like to remove the five pews in this corner of the church to create an open flexible space where tables and chairs could be placed; though these would be folded and stored away when not in use.

Due to the dry-rot issues in 2021, the floor has recently been re-laid and so there is already a level wooden floor beneath the pews.

As well as coffee after the Sunday service, St Andrew's Church also hosts a number of social and fundraising events throughout the year; such as the Pumpkin Festival and Lent lunches. An open and flexible space with the option of putting out tables and chairs would be of an enormous benefit to these events run within the church.



South-West Corner as it looks currently.

Tea/Coffee is served from this table after the Sunday service which also (for lack of room/options) doubles up as a Welcome Table and Donation Station.

Tables and Chairs – we are looking to find some small fold-away tables to be used in this space. We have been offered some chairs second hand (as pictured). These are identical to the (blue) chairs found in St Mary’s Church and the red matches the traditional colour scheme of St Andrew’s. These chairs have been offered to us at c.£10 a chair.



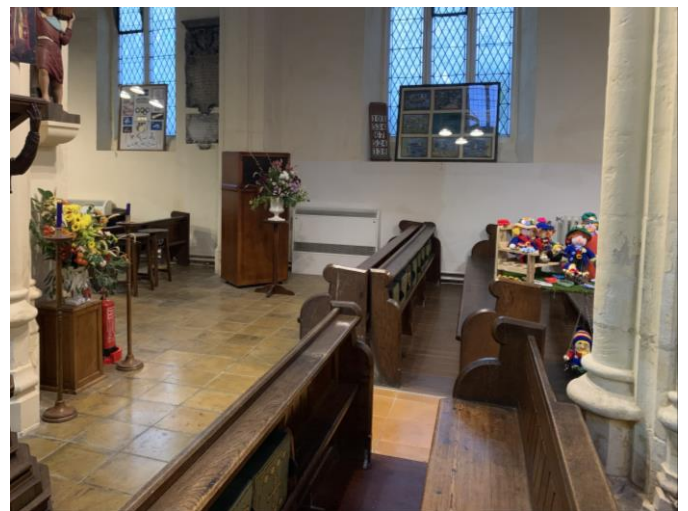
Current Chairs – (as pictured); a number of these were deposited in the church when they were removed from the hall some time ago and we are looking to sell/dispose of these.



Proposal - Removal of two further pews: There are two pews which seem to have found their way to the front of the north and south aisle. It doesn't appear that they were designed to be situated here and so we would like permission to remove these two pews.



North Aisle



South Aisle

Section IV – The Environmental sustainability of the Proposals

We don't envisage these proposals would have any effect on our environmental impact as a church – either positive or negative.

Section V – The Vision

St Andrew's is situated on the edge of Whittlesey which has a growing population (currently c.14000). Currently, St Andrew's Church has no toilet facilities or kitchen facilities. In the longer term, we would like to improve the hospitality we can offer as a church by installing a toilet

and some kitchen facilities but for various reasons, including our current financial position, we don't feel we are in a position to pursue this quite yet.

We would love to welcome our local community into St Andrew's with better hospitality which better reflected the love and welcome of the Good News of Jesus that we are here to share.

Section VI – Why now?

As stated above, we are not currently in a position to fully realise our dreams for the welcome and hospitality we'd like to offer as a church community (with a toilet/kitchen facilities) but we feel this would be an important step for us on that journey. Given the discomfort of asking congregation members to stand in the aisle and drink their Coffee/Tea after the service, and with asking visitors to squeeze onto pews in the Children's Corner to enjoy a Lent Lunch soup, I would argue that this proposal is long overdue.

Section VII – Who will benefit?

Both the regular church congregation and the larger local community would benefit. These proposals would greatly improve the welcome and hospitality we are able to offer as a church. It would transform the hospitality and fellowship we share in with our refreshments after our Sunday Service and the welcome we are able to offer to families with young children who join us for worship (either on a Sunday or within a Wedding/Baptism/Funeral).

It would also greatly improve the welcome we can offer the wider community; for example, at the popular Pumpkin Festival that the Friend's of St Andrew's host and for their planned Lego Festival; giving members of the local community somewhere to comfortably sit and enjoy the refreshments that are offered. The Pumpkin Festival was incredibly well attended last year by the local community – many of whom told us it was their first visit to St Andrew's Church. It would also benefit events such as the Lent 'frugal' lunch which was well attended by members of the wider community/Friends of St Andrews; again, giving them somewhere to more comfortably sit and enjoy the refreshments that are offered.

St Andrew's Church also hosts various community events, such as Music Concerts, which gives us an opportunity to welcome more people from the local community in. These proposals would help us to offer a greater welcome to them.

Our hope is that as we continue to discern God's vision for St Andrew's, it would give us greater flexibility and options for any plans that we might then make and new initiatives that we might like to try, e.g. we'd be able to offer refreshments after a Wild Worship session outside in the churchyard or we'd be able to try different forms of worship, such as Café Church, to reach more of our local families/under 60s with the Good News of Jesus that we would love to share with them.